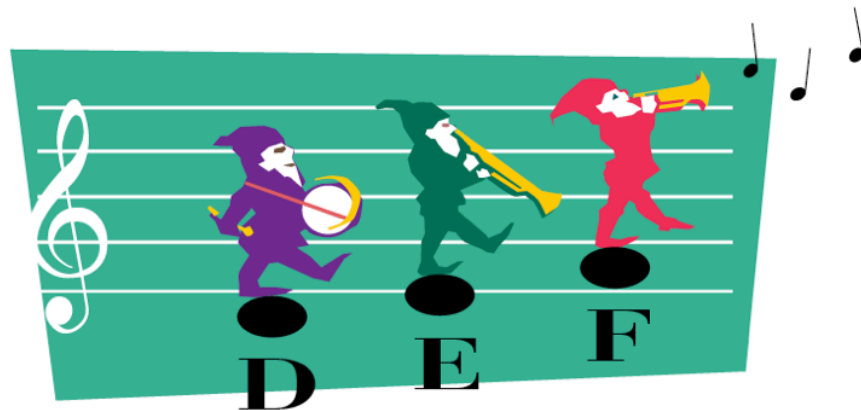




Learning D-E-F



- What are the 3 notes between Middle C and Treble G?
- Which are **space** notes? Which is a **line** note?



March on D-E-F

Like a march

2 on ___?

- Name the notes in the blanks.



f

5

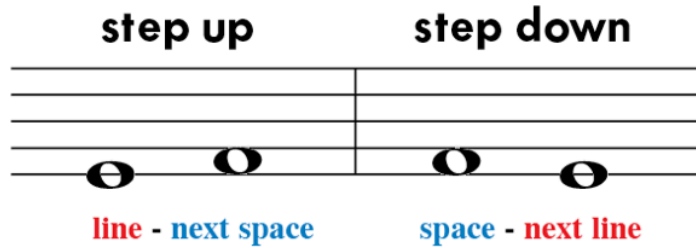
p

Teacher Duet: (Student plays *as written*)

1 5

mf-p

Steps on the Staff



Mister Bluebird

C 5-Finger Scale

- Circle the correct answer for each measure below.



Happily
5 on

stepping up?
stepping down?
repeating?

stepping up?
stepping down?
repeating?

stepping up?
stepping down?
repeating?

step up?
step down?

5

stepping up?
stepping down?
repeating?

stepping up?
stepping down?
repeating?

stepping up?
stepping down?
repeating?



A **STEP** moves from a **line** to the next _____, or a **space** to the next _____.
Name each note in this song aloud. What is the “home” note? _____



Time Signature

4 means **4 counts** or beats in a measure.

4 This 4 stands for a **quarter note** (♩).
It tells us the quarter note gets 1 count.



- Circle the time signature below.
How many counts are in each measure? _____

The Dance Band

With energy 1 on ___?

mf Peo - ple danc - ing all a - round, clap - ping to the big band sound.

3 on ___?

5

I can't stop my feet when I hear that big band beat!



Do you remember the other name for the **bass clef**? (See p. 41) Can you name each note aloud?

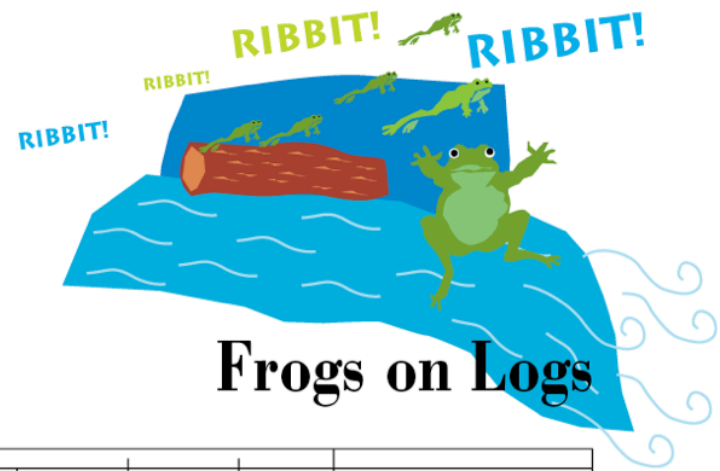
Teacher Duet: (Student plays *1 octave higher*)

Hopping Hand Position:

This piece uses a **hand shift** to “hop up” the keys.

Hint: A *circled* finger number will help you see a hand shift.

To prepare: Play **C** with R.H. finger 2. Hop to **D** with finger 2.
Hop to **E** with finger 2.



Frogs on Logs

Cheerfully

(2) on C 3 2 hop (2) to D

mf Four - teen lit - tle frogs sat up - on a log.

(prepare L.H.)

5 hop (2) to E 4 1

One by one they jumped in - to the lit - tle wa - ter - fall!

1 on ___?

CREATIVE Play this piece with your L.H. in your lap.



For the **final measure**, do a L.H. “bullfrog leap” and play a VERY LOW C as a surprise.



RIBBIT!

Teacher Duet: (Student plays *as written*)

R.H.

L.H. *mp*

5



Learning B

B is a step below Middle C.
B is a space note. It sits on *top* of the bass clef staff.

- Circle all the **B**'s in *Let's Play Ball!*



Let's Play Ball!

With zest

3 on ___?

f Come on, one and all, won't you grab your bat and ball?

5

1 on ___?

3

We will have a win - ning team so let's play ball!



DISCOVERY Practice naming each note in this piece. If you are successful at your next lesson, circle the baseball.

Teacher Duet: (Student plays *as written*)

5

mf