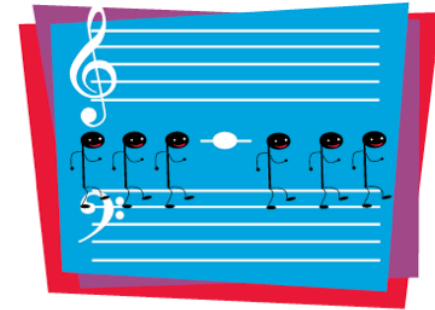
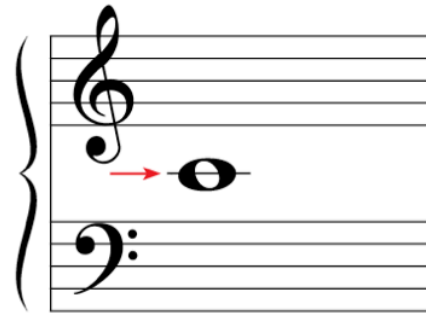


Learning Middle C

On the staff, Middle C is written on a *short line* between the staves.

- Darken the short line with a pencil.
- Now draw two more Middle C's.



Middle C March

R.H. plays
Middle C is closer to the treble staff.

1 repeated notes ② Watch for finger changes.* ③

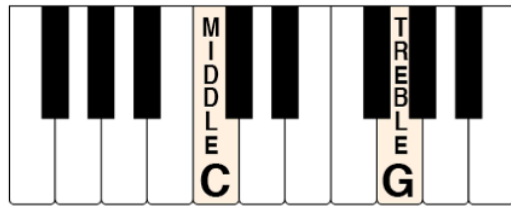
L.H. plays
Middle C is closer to the bass staff.

Teacher Duet: (Student plays as written)

***Teacher Note:** The change of fingering prevents the student from equating a certain note (e.g., Middle C) with a specific finger (e.g., thumb).

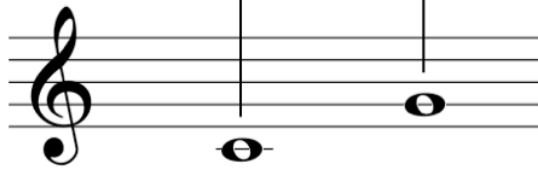
Learning Treble G

Find the first G *above* Middle C.
This is called **Treble G**.



Hand Shape Check:

With R.H. fingers 1 and 5, play back and forth between Middle C and Treble G.



Reading Check:

Treble G is written on LINE 2.



A Ten-Second Song

Lightly

1 on ___? (fill in) 5 on ___? Repeat *p*.

f I just love to play this song, for it's just ten sec - onds long.
p If this song had no re - peats, it would be so short and sweet!

DISCOVERY



Can you play this song in 10 seconds (with the repeat)? Good luck!

Teacher Duet: (Student plays *as written*)

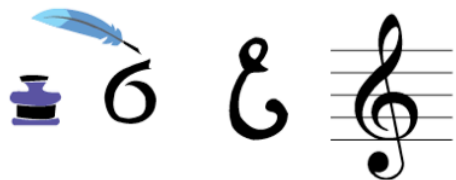
R.H. *mf-pp* on repeat

L.H.

Treble Clef = G Clef

The Treble Clef is also called the **G clef** because it circles around the G LINE on the staff.

The Treble or G clef came from the old letter G shown below.



Driving in the G Clef

Urgently

⁵/₁ Play C and G together.

f Beep, beep, in the streets, beep, beep, traf - fic meets.

measure number

5

Cit - y sounds are all a - round, Beep, honk, beep!

Teacher Duet: (Student plays *as written*)

mf



Finger Challenge:

- Play **Middle C** with L.H. finger 1, then 2, then 3.
- Play **Treble G** with R.H. finger 1, then 2, then 3.
- Which fingers play these notes in *Best Friends*?



Best Friends

Quickly 3 on G (play together)

f C and G, best of friends, friend - ship that will nev - er end.

5 3 on C

p How they play on their lines, mak - ing mu - sic all the time!

DISCOVERY Can you play *Best Friends* using only **finger 2** for each hand? **finger 4** for each hand? Be sure to play with a firm fingertip!

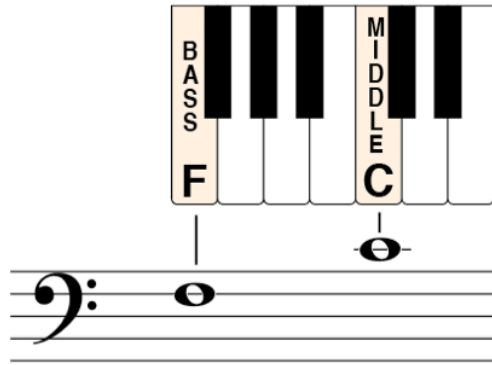
FINGER FUN!

Teacher Duet: (Student plays *as written*)

f-p on repeat 3

Learning Bass F

Find the first F *below* Middle C.
This is called **Bass F**.



Hand Shape Check:

With L.H. fingers 1 and 5, play back and forth between Middle C and Bass F.

Reading Check:

Bass F is written on LINE 4 (or LINE 2 going down).



Gorilla in the Tree

Happily

Big go - ril - la in the tree, rock - ing, rock - ing hap - pi - ly.
 Won't you please throw down for me a ba - na - na from your tree?

mf

1 on ___? 5 on ___?

DISCOVERY



Can you play this piece **hands together**? (R.H. uses a higher C and F.)

Teacher Duet: (Student plays *as written*)

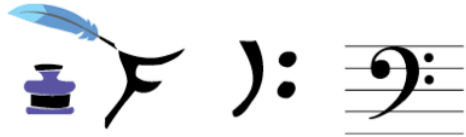
mf

1. 2.

Bass Clef = F Clef

The Bass Clef is also called the **F clef** because the big starting dot is on the F LINE. Notice the two smaller dots surround the F LINE.

The Bass or F clef came from the old letter F shown below.



My Invention

Like a machine
1 on __?

mf My in - ven - tion is worth men - tion, if you saw it you would know.

3 on __?

5

It's fan - tas - tic and bom - bas - tic and what's more it e - ven glows!

CREATIVE Make *My Invention* longer with more **Bass F**, **Middle C**, and **Treble G** notes. To end, have your invention “break down” and stop.

Teacher Duet: (Student plays as written)

1 5 ^{8^{va} throughout}

1. 2. 5 2 1

mf