

МИКРОКОСМОС

Тетрадь 1

Шесть мелодий в унисон

1.



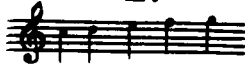
Piano

$\text{♩} = 96$

1

5

2.



[20 сек.]

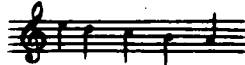
a)

$\text{♩} = 96$

1

5

[20 сек.]



b)

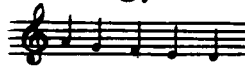
$\text{♩} = 96$

5

1

[20 сек.]

3.



$\text{♩} = 96$

5

1

[30 сек.]

4.

♩ = 96

[20 сек.]

5.

♩ = 104

[30 сек.]

6.

♩ = 104

[20 сек.]

7. Пунктирные ноты

♩ = 112

5

1

5

[30 сек.]

8. Репетиции

♩ = 128

1

5

5

[30 сек.]

9*. Синкопы

♩ = 96

1

5

¹⁾ Звездочка около порядкового номера пьесы указывает, что к ней имеется авторское примечание в конце тома (Примеч. ред.).

Musical score for exercise 10* in 3/4 time, featuring a treble and bass clef. The melody in the treble clef consists of eighth and quarter notes, while the bass clef provides a steady accompaniment of quarter notes. The exercise is marked with a tempo of 108.

[35 сек.]

10*. Обеими руками, попеременно

Two short musical staves showing the starting hand positions for the exercise. The top staff is in treble clef and the bottom in bass clef, both in 3/4 time.

♩ = 108

Musical score for exercise 10* in 3/4 time. The treble clef part starts with a finger number '1' above the first note, and the bass clef part starts with a finger number '5' above the first note. The exercise is marked with a tempo of 108.

Continuation of the musical score for exercise 10* in 3/4 time, showing the treble and bass clef parts.

Continuation of the musical score for exercise 10* in 3/4 time, showing the treble and bass clef parts.

[40 сек.]

11. Параллельное движение

Two short musical staves showing the starting hand positions for exercise 11. The top staff is in treble clef and the bottom in bass clef, both in 4/4 time.

♩ = 140

Musical score for exercise 11 in 4/4 time. The treble clef part starts with a finger number '2' above the first note, and the bass clef part starts with a finger number '4' above the first note. The exercise is marked with a tempo of 140.

Continuation of the musical score for exercise 11 in 4/4 time, showing the treble and bass clef parts.

[27 сек.]

12. Зеркальное отражение



$\text{♩} = 100$



13. Смена позиций

[25 сек.]

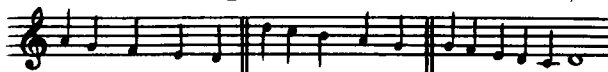


$\text{♩} = 96$



14.*) Вопрос и ответ

[30 сек.]



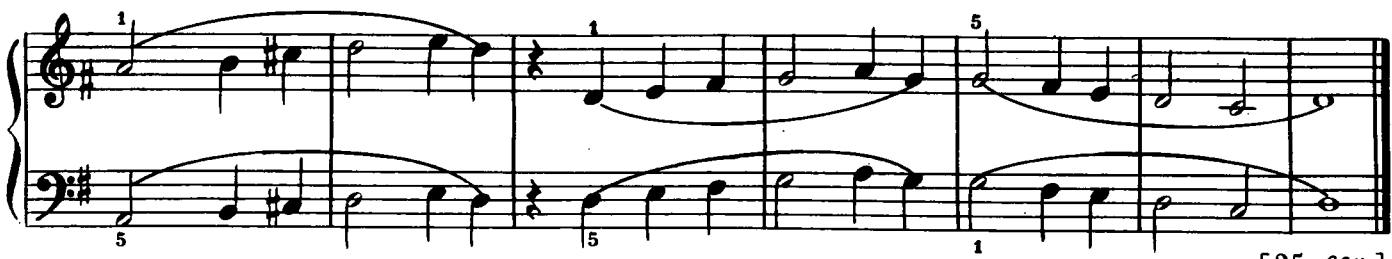
$\text{♩} = 104$



15. Деревенская песня



♩ = 124



[25 сек.]

16. Параллельное движение со сменой позиций



♩ = 104

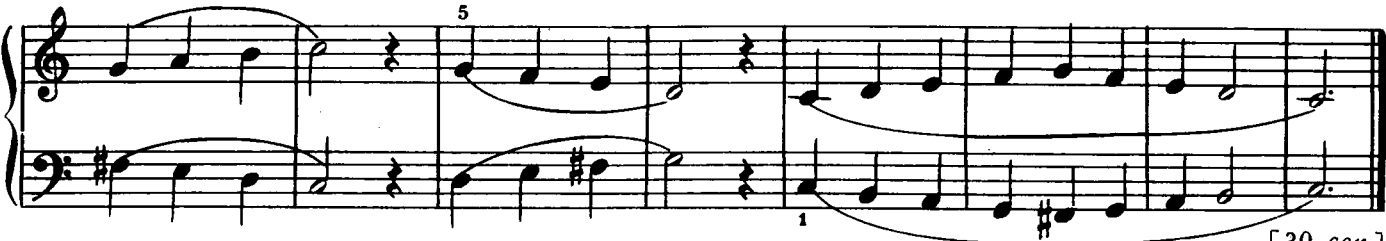


[45 сек.]

17. Противоположное движение



♩ = 96



Четыре мелодии в унисон

♩ = 120

18.



♩ = 104

19.

