


Oboe Fingerings


Keyboard Visualization

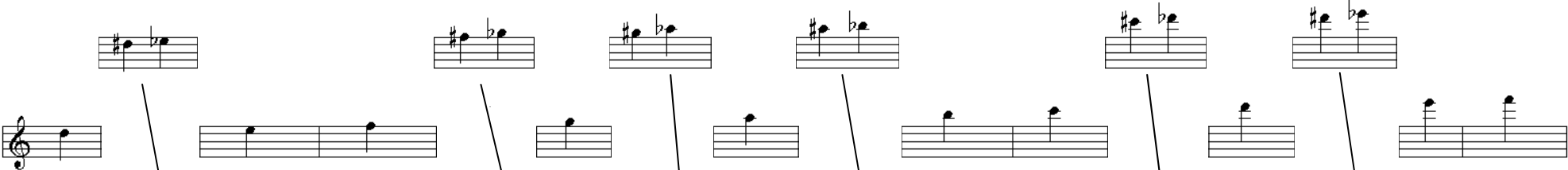
When multiple fingerings are listed, the fingering on the bottom is most common.

The chart displays fingerings for the following notes: A# Bb, B, C, C# Db, D, D# Eb, E, F, F# Gb, G, G# Ab, A, A# Bb, B, C, C# Db. Each note is represented by a vertical bar with a fingering diagram. Some notes have multiple diagrams, indicating alternative fingerings. The diagrams show the placement of fingers (1-5) on the keys, with black dots indicating which keys are pressed.

 FLAT SIGN Go down one half step (or one key)

 NATURAL SIGN Cancels any flat or sharp

 SHARP SIGN Go up one half step (or one key)



D	D# Eb	E	F	F# Gb	G	G# Ab	A	A# Bb	B	C	C# Db	D	D# Eb	E	F

FLAT SIGN Go down one half step (or one key)
 NATURAL SIGN Cancels any flat or sharp
 SHARP SIGN Go up one half step (or one key)

